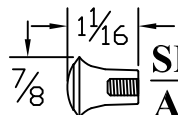


Knob Options (CIRCLE ONE)

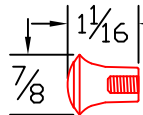
COMPLETE THE CABLE PART NUMBER IN THE BOX

X000-3307 -



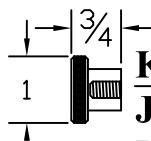
SMALL BLACK KNOB:

- A. (plain)
- B. "CHOKE"
- C. "SHUT OFF"



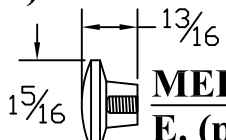
SMALL RED KNOB:

- D. (plain)



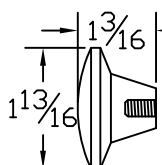
KNURLED KNOB:

- J. (Stainless steel)
- K. (brass)



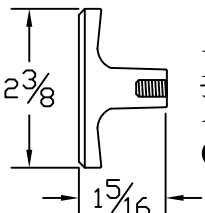
MEDIUM KNOB:

- E. (plain black knob)
- F. (plain red knob)



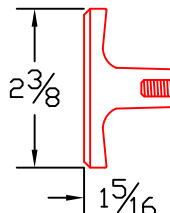
LARGE KNOB:

- G. (plain black knob)
- H. (plain red knob)



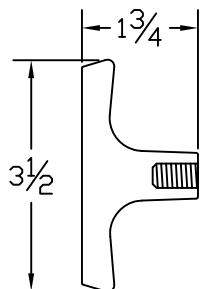
BLACK T HANDLE:

- N. (plain)
- O. "CHOKE"



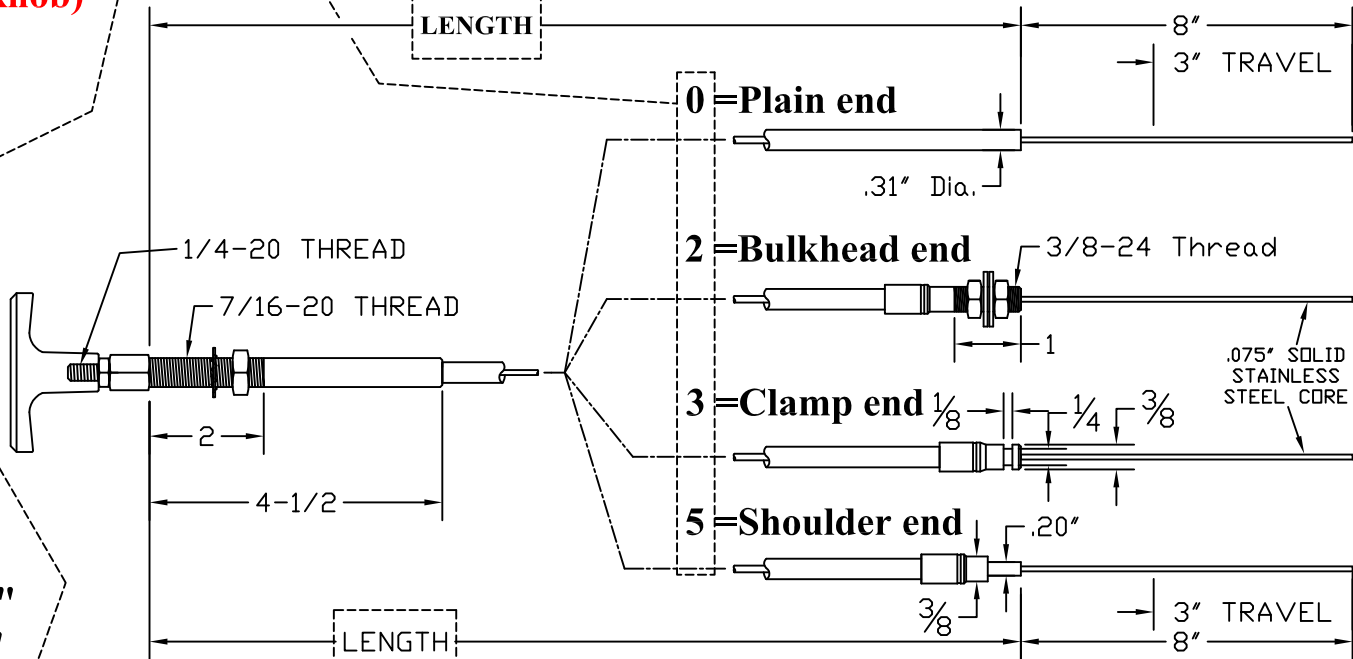
RED T HANDLE:

- P. (plain)
- Q. "SHUT OFF"
- R. "EMERG. STOP"
- S. "ENGINE STOP"
- T. "FIRE"
- U. "STOP"



LARGE T HANDLE:

- V. (plain black)
- W. (plain red)




NAME: _____
 ADDRESS: _____
 PHONE: _____

SIGNATURE: _____

BY SIGNING I APPROVE THE MEASUREMENTS ON THIS DRAWING, AND UNDERSTAND THAT THIS CUSTOM CABLE IS NON-RETURNABLE

Revisions
Rel- A- Updated Knob option letters 12/13/2021 JWY



6019 CR 77 - Millersburg, OH 44654 - (330) 893-0355

CABLE ORDER SHEET
3 SERIES 3" TRAVEL UTILITY, EXPOSED CORE

Drawn: JWY	Date: 3/28/2020	Drawing Number	Rev A
Sim to:		X000-3307x-LGTH	Page 1 of 1